

## Unexpected Cytological Findings in a Feline Neck Mass

### Contributors

**Sara MEAZZI**<sup>1</sup>, Marianna PANTOLI<sup>1</sup>, Matteo GAMBINI<sup>1</sup>, Antonella RIGILLO<sup>1</sup>, Elisabetta VALSECCHI<sup>2</sup>, Gabriele RATTI<sup>1</sup>

<sup>1</sup>I-Vet Laboratory, Flero, Italy

<sup>2</sup>Animal Care Veterinary Clinic, Medolago, Italy

Sara Meazzi - sara.meazzi@i-vet.it

### Specimen

Fine needle aspiration of a subcutaneous mass located on the right side of the neck, close to the trachea, firm, approximately 1 cm diameter

### Signalment

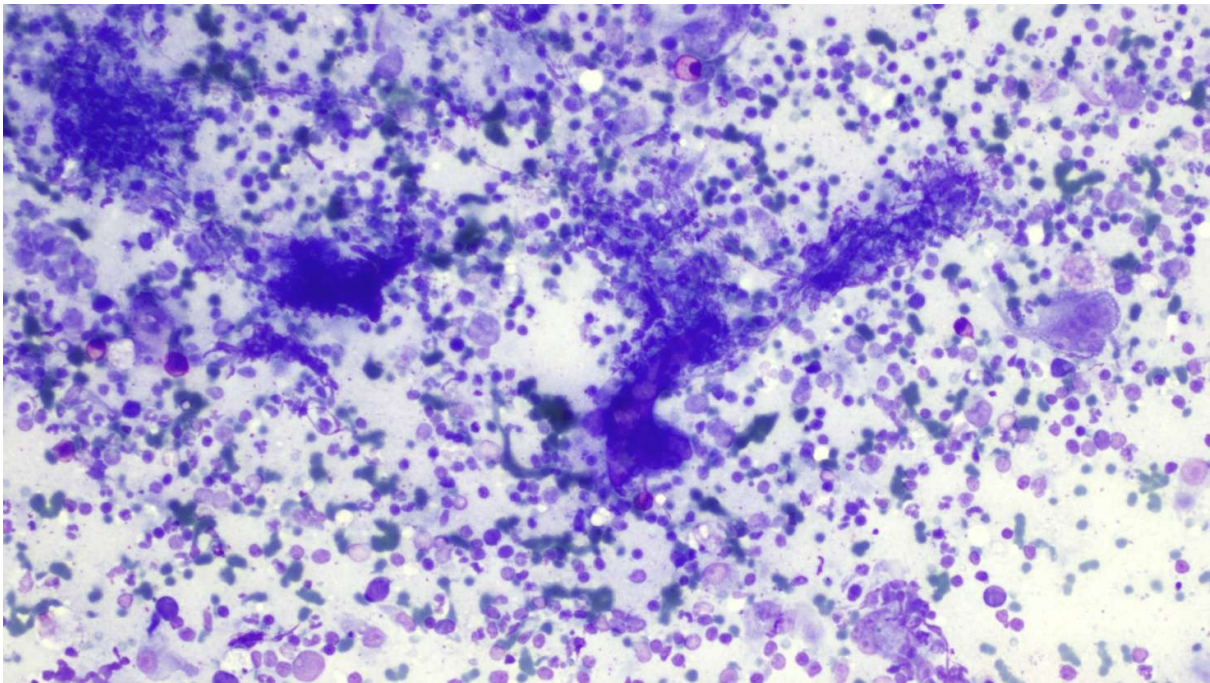
Alessia, Cat, Domestic shortair (DHS), female spayed, 5 years old,

### History

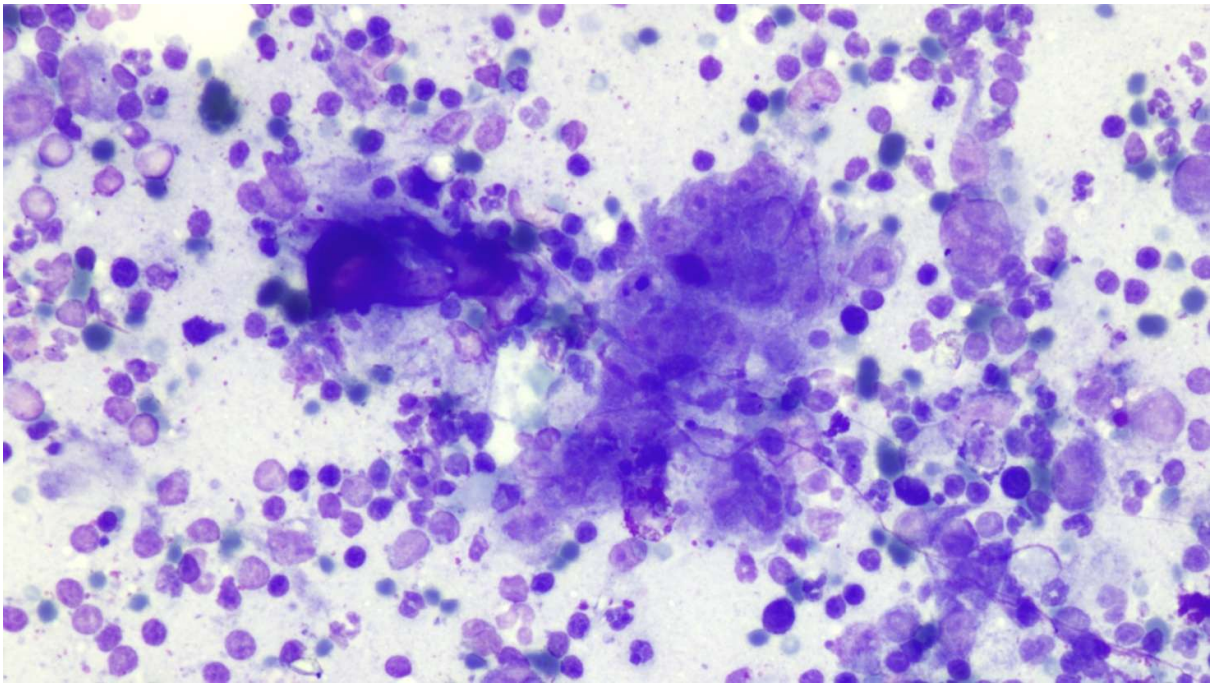
Alessia is an indoor - outdoor cat (access to a private garden), living with another cat and regularly vaccinated. It was asymptomatic except for the presence of a small firm mass located on the right side of the neck, near the trachea.

### **Clinical findings**

Fine needle aspirate (FNA) of the subcutaneous neck mass. Staining: May – Grünwald Giemsa.



*Figure 1. 20x Objective*



*Figure 2. 40x Objective*



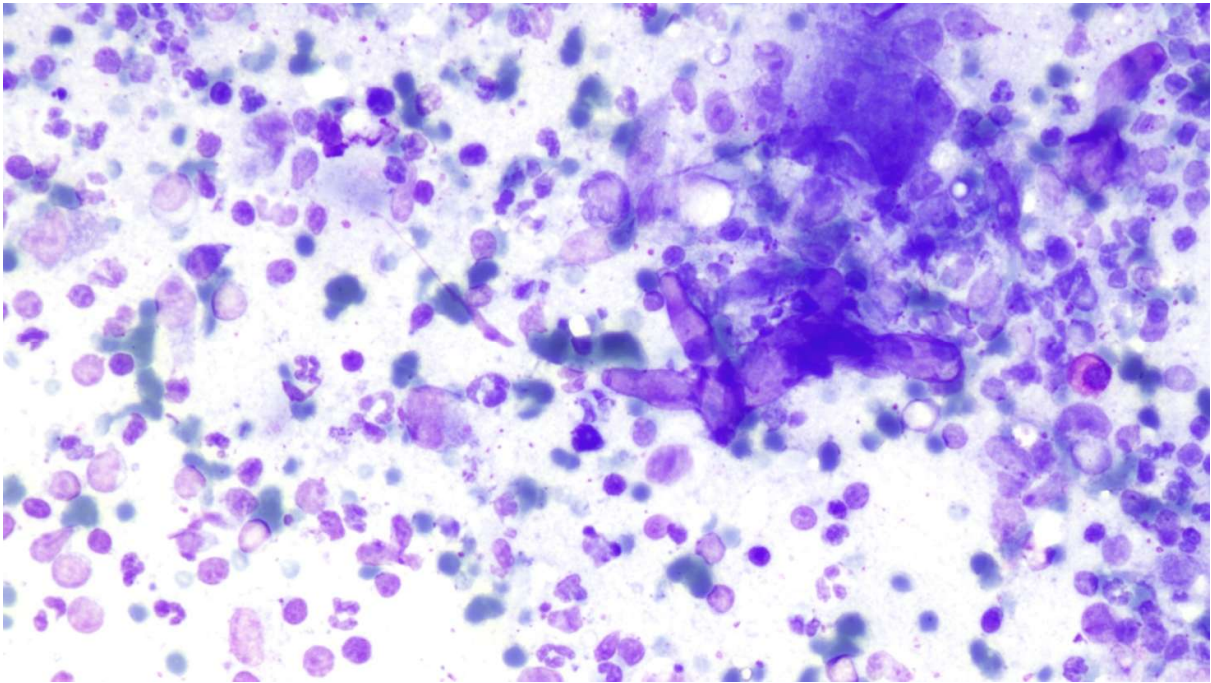


Figure 3. 40x Objective

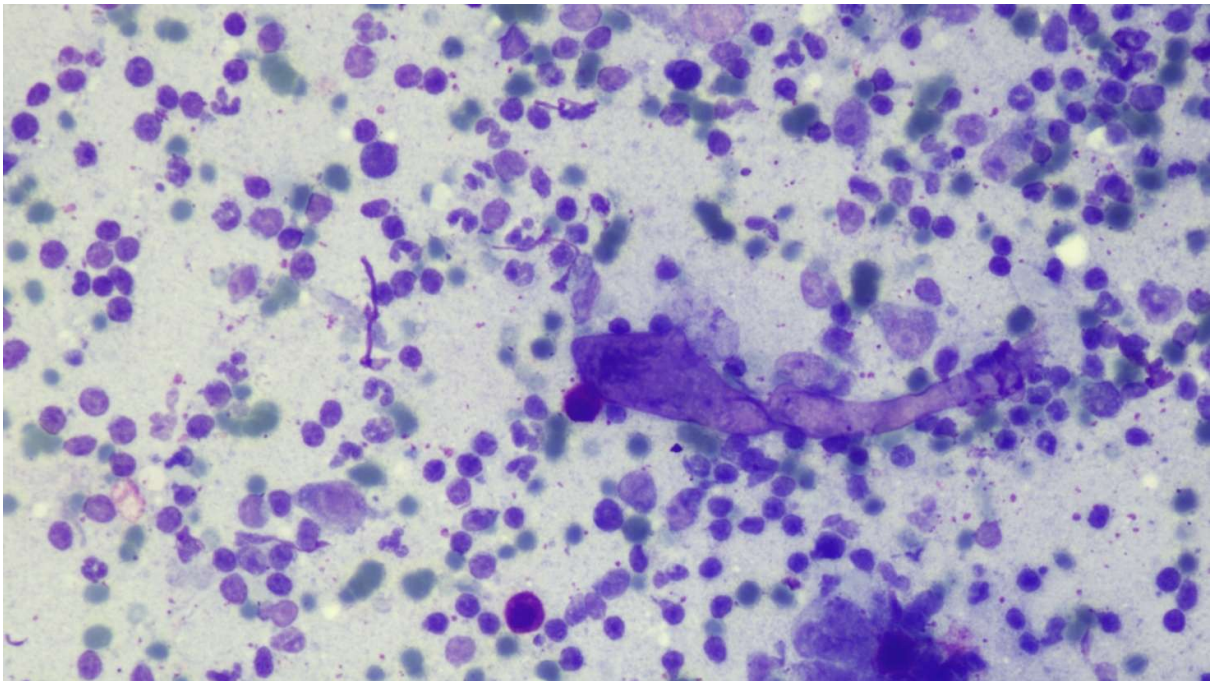


Figure 4. 40x Objective



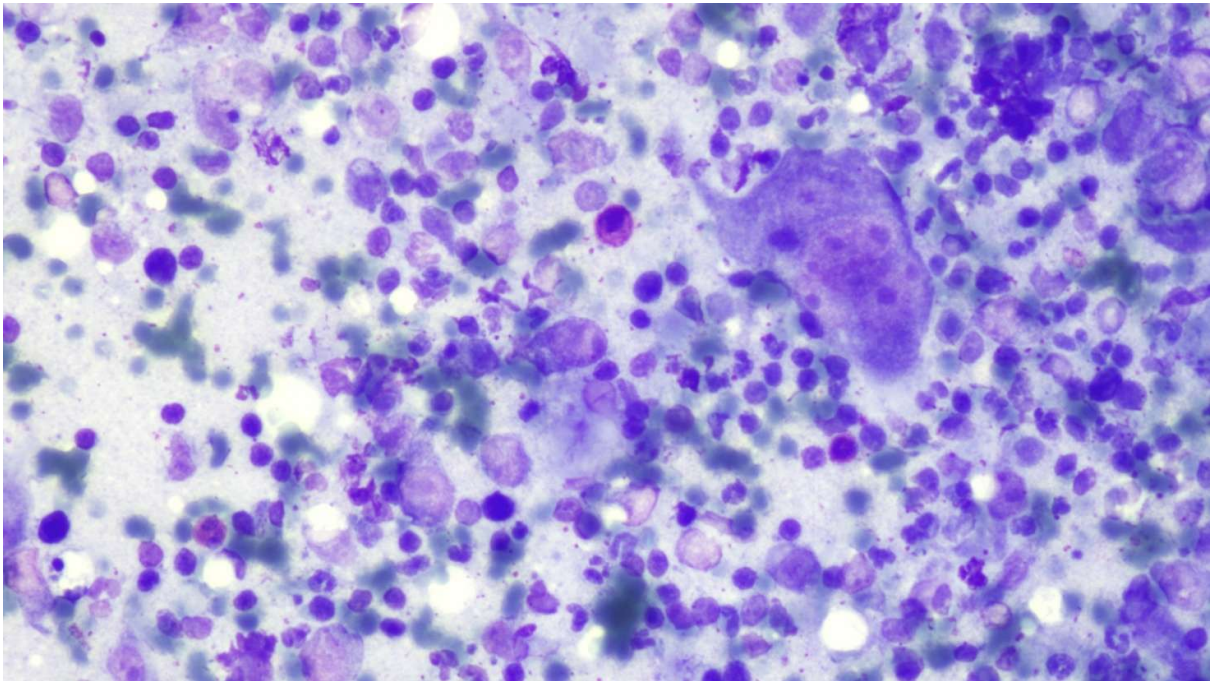


Figure 5. 40x Objective

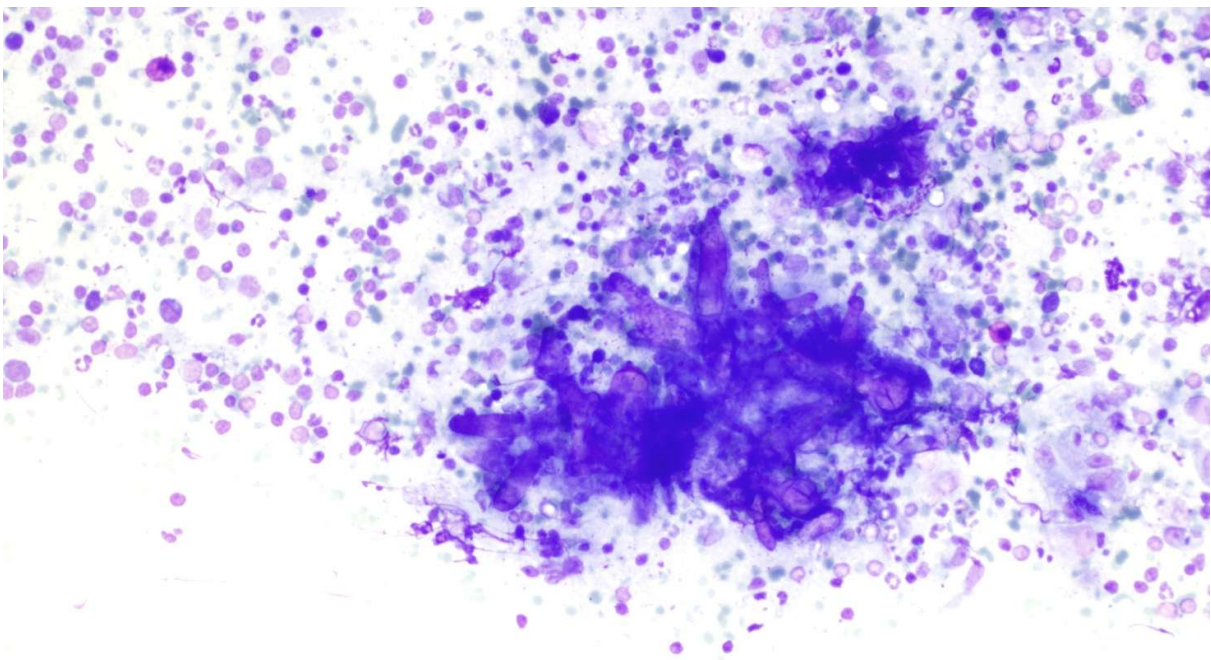


Figure 6. 40x Objective

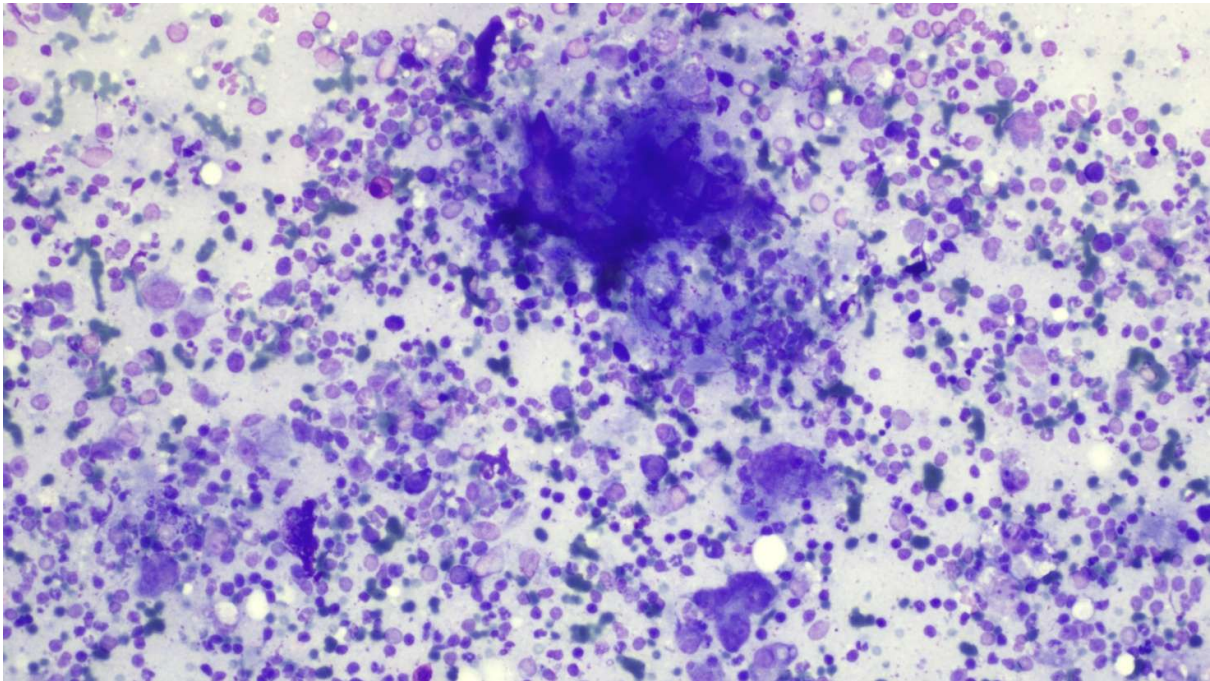


Figure 7. 20x Objective

### Questions

What is your cyological interpretation and diagnosis?

Which further analysis would you recommend?